



Adjective or Adverb

Choose the correct word to complete the sentence.
Circle in blue if it is an adjective and green if it is an adverb.



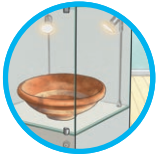
The (quick / quickly) dog chased a squirrel in the park.



The child (quick / quickly) sprinted across the field.



Sofia (rare / rarely) played tennis anymore.



The (rare / rarely) object was displayed in the museum.



Peter was (careful / carefully) as he climbed the tree.



Priya (careful / carefully) carried a heavy jug of water into the kitchen.



The (noisy / noisily) parrots squawked as they flew.



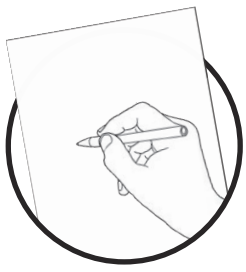
The pupils played (noisy / noisily) on the playground.



Mr Chen (tight / tightly) tied his shoelace.



Sami complained that his shoes were too (tight / tightly).



Adjective or Adverb Answers

Choose the correct word to complete the sentence.

Circle in blue if it is an adjective and green if it is an adverb.



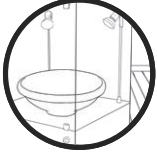
The **quick** dog chased a squirrel in the park.



The child **quickly** sprinted across the field.



Sofia **rarely** played tennis anymore.



The **rare** object was displayed in the museum.



Peter was **careful** as he climbed the tree.



Priya **carefully** carried a heavy jug of water into the kitchen.



The **noisy** parrots squawked as they flew.



The pupils played **noisily** on the playground.



Mr Chen **tightly** tied his shoelace.



Sami complained that his shoes were too **tight**.